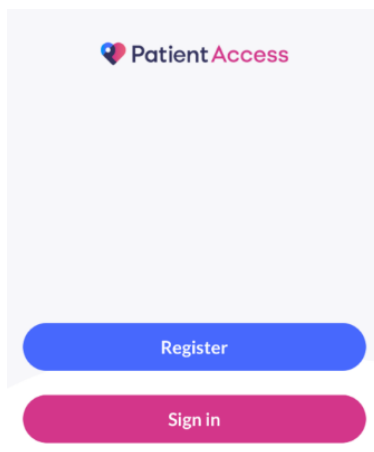


Patient Access – Apple device...

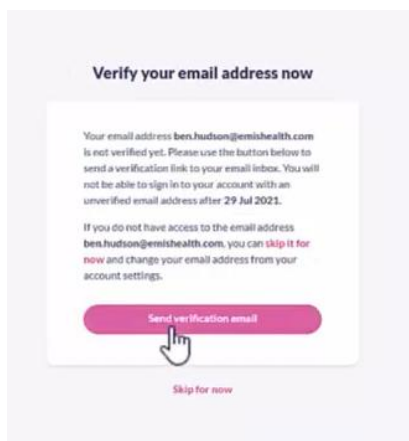
1. Download Patient Access App:



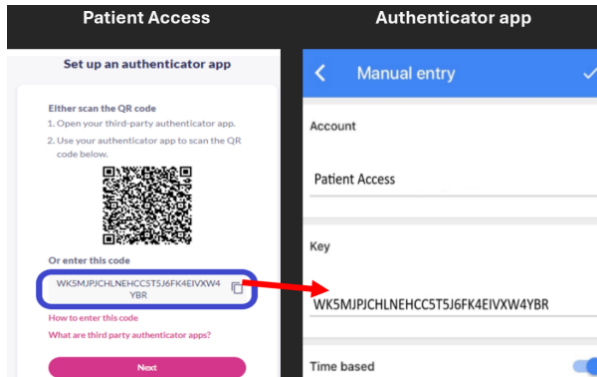
2. Register new account on Patient Access



3. Verify your email address



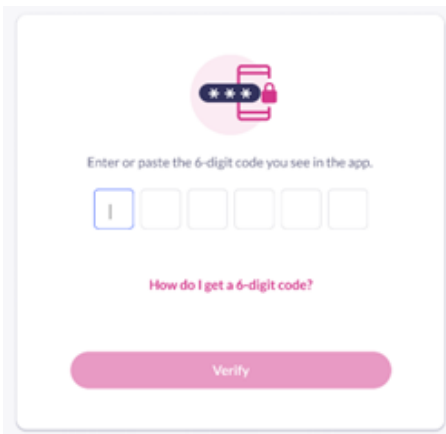
4. Patient Access now must be linked to an Authenticator:
Account Name – Patient Access
Secret Key – Code from Patient Access



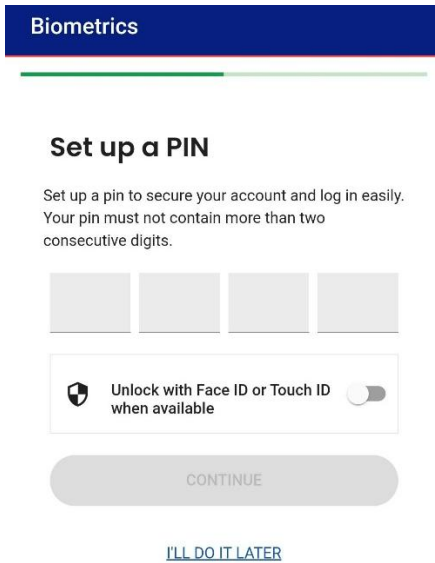
5. Apple users can press and hold the QR Code and save it into Passwords to generate the 6-digit code).



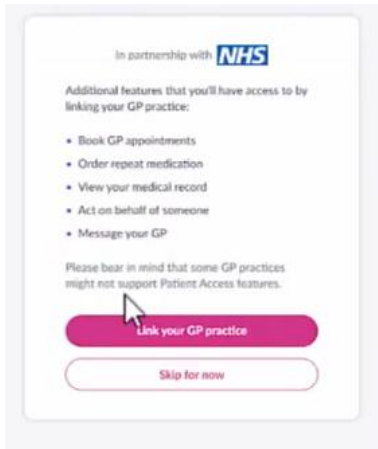
6. Enter the 6-digit code in Patient Access



7. If you have Biometrics on your device, you will have the option to use this for every log in rather than the Authenticator app.



8. Link GP Practice using unique codes from EMIS – copy and paste if you have the email, or else manually input.



You have requested access to online services.

Accessing online services

To access online services:

1. Create an account with one of the following service providers:

Service provider	Website
Patient Access	https://www.patientaccess.com
i-Patient	https://i-patient.net

2. Provide the following online services account details when prompted:

Linkage Key	cEypBGddUAQx5
ODS Code	100035
Account ID	602333100035